

H800AJ

ARTICULATING BOOM LIFT

JLG
reachingout®

Performance

Platform Height	24.38 m
Working Height	26.38 m
Horizontal Outreach	15.80 m
Up and Over Height	9.78 m
Swing	360 Degrees Continuous
Platform Capacity	230 kg
Platform Size	0.91 x 2.44 m
Platform Rotator	180 Degrees Hydraulic
Jib	1.83 m
Jib Range of Articulation	130 Degrees (+70, -60)
Weight	16,100 kg
Drive Speed	4.8 km/h
Gradeability	45%
Turning Radius	
Outside	6.02 m
Inside	3.80 m

Standard Specifications

Power Source

Diesel Engine	
Kubota Tier 4 Final	18.6 kW
Motor/Generator Power	22.3 kW
Fuel Tank Capacity	113.6 L
Batteries	12V 205 AH Maintenance free AGM
System Voltage	84V
Battery Quantity	14

Hydraulic System

• Capacity	115.8 L
• Auxiliary Power	12V-DC

Tires

• Standard	Foam-Filled, Non-Marking
------------	--------------------------

Standard Features

- Skyguard®
- 4 Wheel Drive
- 180 Degree Hydraulic Platform Rotator
- Platform Console Machine Status Light Panel*
- Automatic Engine Idle, Start / Stop
- Automatic Battery Charger in Hybrid Mode
- Electric Only Capability
- 5 Degree Tilt Alarm/Indicator Light
- Swing Out Engine Tray
- 12V-DC Auxiliary Power
- Hourmeter
- Proportional Controls
- Control ADE® System
- Lifting/Tie Down Lugs
- Horn
- Oscillating Axle
- Operator Tool Tray
- Inward Self-Closing Swing Gate
- Flashing Amber Beacon
- Motion Alarm
- Gull Wing Hoods

* Provides indicator lights at platform control console for system distress, 5 degree tilt light, and foot switch status.



Accessories & Options

- 0.91 x 1.83 m Platform
- 1/2 in. Air Line to Platform
- Light Package
- Platform Worklights
- 5.5 kVA Generator
- Cable Ladder Carrier
- Platform Work Surface
- Console Cover
- Soft Touch System
- Accessory Packages:
 - SkyGlazier® Package
 - Nite Bright® Package
 - Pipe Rack

Note: Some options may increase lead time, and some option combinations may not be available.

H800AJ

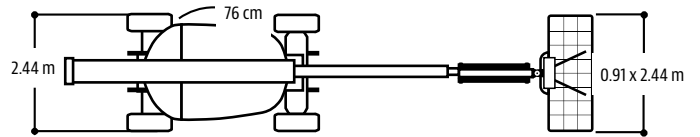
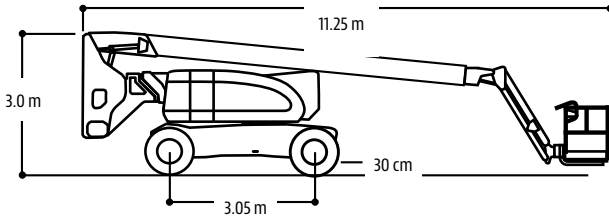
ARTICULATING BOOM LIFT



Dimensions

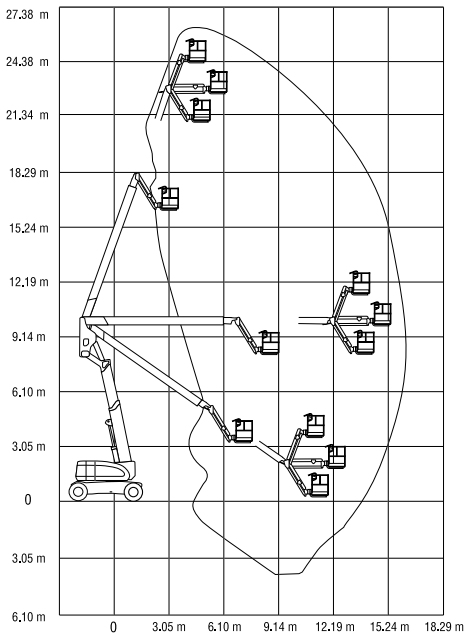
All dimensions are approximate.

H800AJ



Reach Diagram

H800AJ



The JLG "1 & 5" Warranty

JLG Industries, Inc. backs its products with its exclusive "1 & 5" Warranty. We provide coverage on all products for one (1) full year and cover all specified major structural components for five (5) years. Due to continuous product improvements, we reserve the right to make specification and/or equipment changes without prior notification. This machine meets or exceeds AS/NZS 1418.10 2011 as originally manufactured for intended applications.

Part No.: 3131123AJ
R121804



JLG Industries (Australia)

358 Park Road
Regents Park, NSW 2143
Telephone 02 8718 6300
Fax 02 8718 6377

www.jlg.com.au

An Oshkosh Corporation Company