



# SJ46/51 AJ

## ARTICULATING BOOMS

### STANDARD FEATURES

- EASYDRIVE™ Direction sensing drive and steer controls
- SKYRISER™ True vertical rise
- AXLDRIVE™ Axle-based 4WD system
- Operator controlled locking rear differential and limited slip front differential
- Oscillating steer axle
- Drivable at full height
- 45% Gradeability
- Wet disc SAHR brakes (rear axle)
- Relay based control system with SKYCODED™ colour coded and numbered wiring
- Deutz D2011L03i diesel engine
- ECOSTART anti-engine idle
- Swing out engine tray
- Swing up cowlings for easy access
- Lockable power disconnect switch
- 7.5 kW Generator (Includes hydraulic oil cooler)
- Flashing light
- Proportional controls
- 0.76 x 1.83 m Platform
- Bolt-in platform railing system
- Lanyard attachment points
- Dual-entry sliding mid rails
- Secondary Guarding Electrical (SGE)
- Overload sensing system
- Wiring for AC outlet on platform
- Tilt alarm (5.0° x 5.0°) with drive and lift cut-out
- Single point emergency lowering
- Hourmeter
- Operator horn
- All motion audible alarm
- 355° Non-continuous turret rotation
- Tie down / lifting lugs
- 12 x 16.5 Grip lug foam-filled non-marking tyres

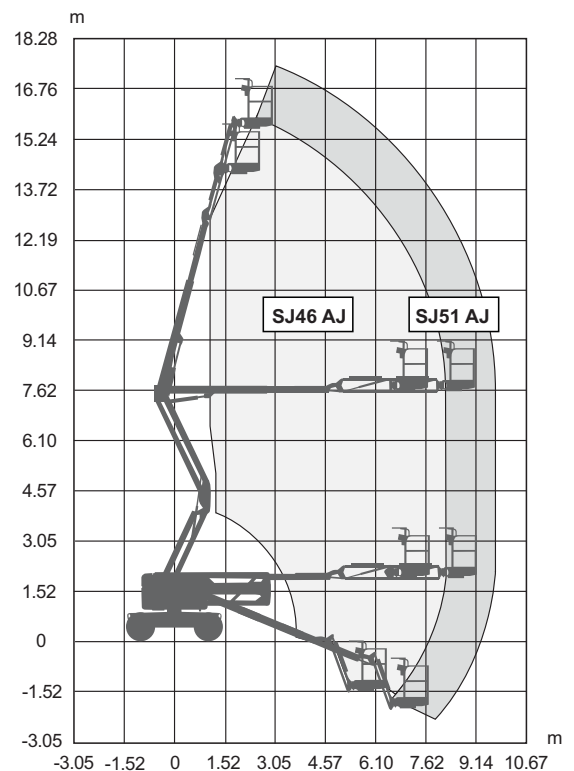
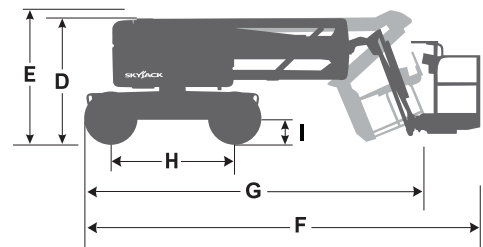
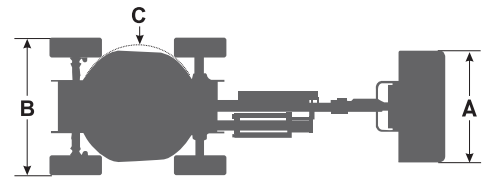
### OPTIONS

- Glazier kit
- Pipe rack
- Tool caddy
- 0.76 x 1.52 m Platform
- Side spring hinged entry gate
- Half-height mesh platform (either size)
- Diesel scrubber
- Bio oil
- Control box cover
- ELEVATE telematics

† Standard lead times may be increased when optional equipment is added, consult factory.  
‡ Capacities and machine weights may differ when options are added.

# SJ46/51 AJ ARTICULATING BOOMS

Dimensions	SJ46 AJ	SJ51 AJ
Work Height	16.10 m	17.55 m
Platform Height	14.10 m	15.55 m
Horizontal Reach	7.54 m	9.03 m
Up and Over Height	7.45 m	7.45 m
<b>A</b> Platform Size	0.76 x 1.83 m	0.76 x 1.83 m
<b>B</b> Stowed Width	2.29 m	2.29 m
<b>C</b> Tailswing	0	0
<b>D</b> Stowed Height	2.06 m	2.06 m
<b>E</b> Transportation Height	2.16 m	2.27 m
<b>F</b> Stowed Length	6.35 m	7.10 m
<b>G</b> Transportation Length	5.97 m	6.72 m
<b>H</b> Wheelbase	2.03 m	2.03 m
<b>I</b> Ground Clearance	0.39 m	0.39 m
Specifications	SJ46 AJ	SJ51 AJ
Rotation	355° NC	355° NC
Platform Rotation	170°	170°
Jib Length	1.40 m	1.40 m
Jib Range +/-	+70° / -75°	+70° / -75°
Weight	6,400 kg	7,050 kg
Gradeability	45%	45%
Turning Radius (Inside)	2.49 m	2.49 m
Turning Radius (Outside)	4.34 m	4.34 m
Axle Oscillation	12.70 cm	12.70 cm
Drive Speed (High speed)	7.7 km/h	7.7 km/h
Capacity	227 kg	227 kg
Local Floor Load (With Rated Load)	8.73 kg/sq cm	9.59 kg/sq cm
Overall Floor Load (With Rated Load)	1,030 kg/sq m	1,122 kg/sq m
Maximum Wind Rating	12.5 m/s	12.5 m/s
Personnel Rating at Max Wind Speed	2	2
Tyre Type	Foam-Filled, NM	Foam-Filled, NM
Tyre Size	12 x 16.5	12 x 16.5
Diesel Engine	Deutz D2011L03i 48 HP (36 KW)	Deutz D2011L03i 48 HP (36 KW)
Fuel Tank Capacity	64 L	64 L
Hydraulic Reservoir	91 L	91 L



**SJ46/51 AJ WORKING ENVELOPE**

Skyjack Australia Pty Ltd  
Unit 1, 35 Honeycomb Drive  
Eastern Creek  
NSW 2766  
Australia  
Phone +61 (0) 2 9854 0700  
Fax +61 (0) 2 9854 0777  
Email: jcranmer@skyjack.com

[www.skyjack.com](http://www.skyjack.com)

**SKYJACK**  
simply reliable